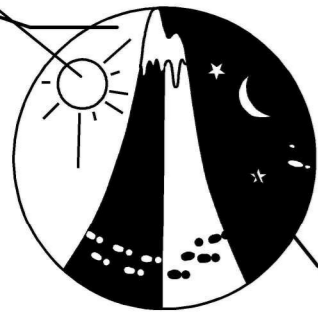
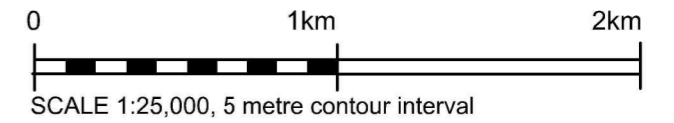


City Lights ... King of the Mountain Rogaine

WARA 6 hour, 24th March 2012

3 PM - 9 PM

Saturday Sunset 6:22 pm Sat Moonrise 7:41 am Moonset 7:00pm



LEGEND

SCALE 1:25,000, 5 metre contour interval

- Building
- 49 Controls 109
150m diam.
- Contours
- Dams
- Hash House
- Magnetic North Line
- Out of Bounds
- Road - Bitumen
- Road - Major Gravel
- Track
- Watercourse
- Water Drop Water
- Patrolled Road

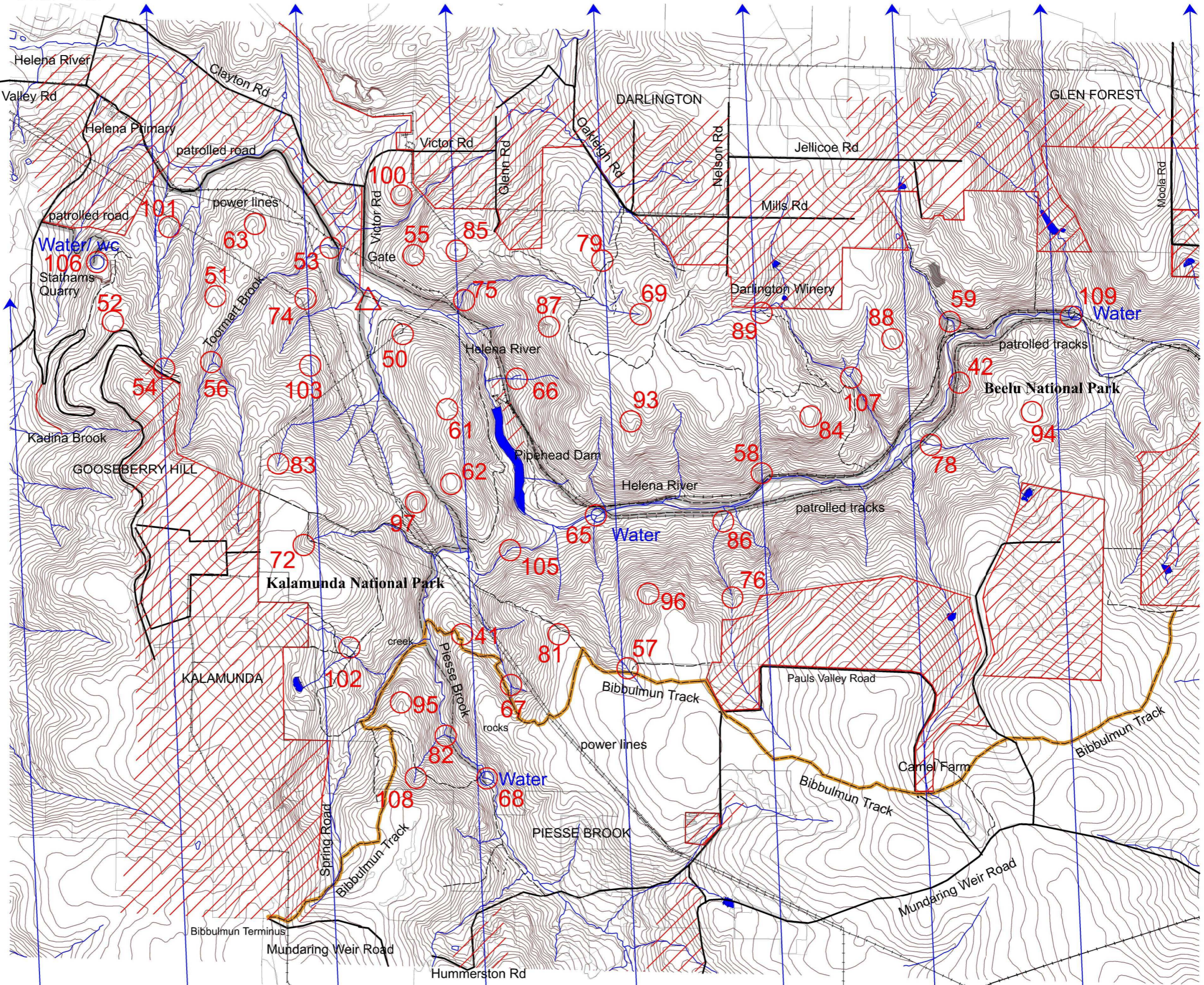
SETTERS AND VETTERS

Jim Klinge Peter Beyer Dave Symons

SPECIAL THANKS TO DEC



This map was produced using OCAD 9 by the Western Australian Rogaining Association, wa.rogaine.asn.au. Data supplied by Landgate and used under copy licence 393/93. Possession of this map does not give right of entry to this area.



The City Lights, King of the Mountain

No.	Description	Points
-----	-------------	--------

41	Rocky spur, North of Bibulmun Track	40
42	The Gully, next to pipe, leaking...	40

50	The track end, powerline	50
51	The spur, west of track	50
52	A knoll	50
53	The Watercourse	50
54	The Watercourse, 6m North of track	50
55	The spur, North side	50
56	The Watercourse junction	50
57	The watercourse.	50
58	The gully	50
59	A knoll, rocky	50

61	The saddle	60
62	The knoll	60
63	A rocky knoll	60
65	The water course, 20m SW from bridge, WATER	60
66	The gully	60
67	The Junction of watercourses	60
68	Water on track, control is 30m at 40deg. WATER	60
69	The gully	60

If you are injured, make your way to a water drop or a patrolled road and wait there for help

6 Hour Rogaine 24th March 2012

3:00- 9:00pm Saturday

No.	Description	Points
-----	-------------	--------

72	The gully, 30m up from track	70
74	The spur	70
75	The gully	70
76	The watercourse,	70
78	The gully	70
79	The saddle	70

81	The spur	80
82	The watercourse junction	80
83	Head of gully	80
84	The knoll	80
85	The knoll	80
86	The gully	80
87	Head of gully	80
88	The knoll, NW	80
89	The Watercourse, 20m west of track	80

93	The Spur, rocky outcrop	90
94	The knoll, South side	90
95	A knoll	90
96	A rocky knoll	90
97	The knoll	90

100	The knoll	100
101	A rocky knoll	100
102	The Watercourse 25m West of track	100
103	A Rocky outcrop on broad spur	100
105	The watercourse, top of waterfall	100
106	Inside the quarry, gazebo, WATER, TOILET	100
107	Gully intersection	100
108	Head of gully	100
109	Water course junction WATER	100

Important Information

Control Cards

2:30pm Saturday

Start/ Finish

3:00- 9:00pm Saturday

Briefing

2:45pm Saturday

No Hash House

Sunset 6:22 pm Sat.

Water Drops/ Controls

65, 68, 106, 109

Patrolled Roads.

indicated grey on the map

Late Penalty

10 points per minute or part minute.

LATE (no points) after 2130 Saturday

Controls Used

49

Total Points

3550